



孕龍科技股份有限公司
ZeroPlus Technology Co., Ltd.

SPECIFICATION

MODEL: B08001-LAP-DIGITAL LOGIC-M

PART NO: _____

VERSION: V1.41

Approver		Check	Design
GM	PM		

Customer Confirm

*Please fax the file to ZeroPlus Technology after signing.

2F, NO.123, Jian Ba Rd,

Hsian, R.O.C.

Tel: +886-2-66202225

Chung Ho City, Taipei

Fax: +886-2-22234362



Content

1	Software Download	3
2	Software Installation	6
3	Software Register	10
4	User Interface	13
5	Operating Instructions	16



1 Software Download

Please install the software as the following steps:

Remark: We won't have additional notice for you, when there is any modification of the module specification. If there is some unconformity caused by the module version upgrade, users should take the module software as the standard.

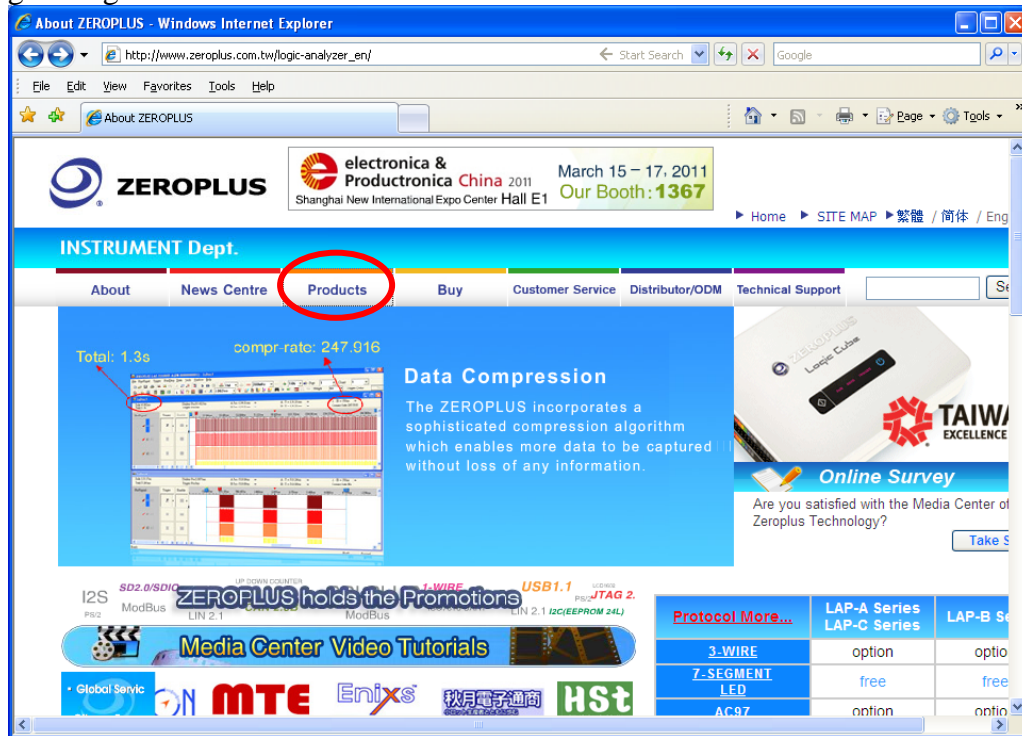
STEP 1. Visit the website of ZeroPlus: <http://www.zeroplus.com.tw>.

STEP 2. Click the **English** in the Instrument Division part on the Homepage.

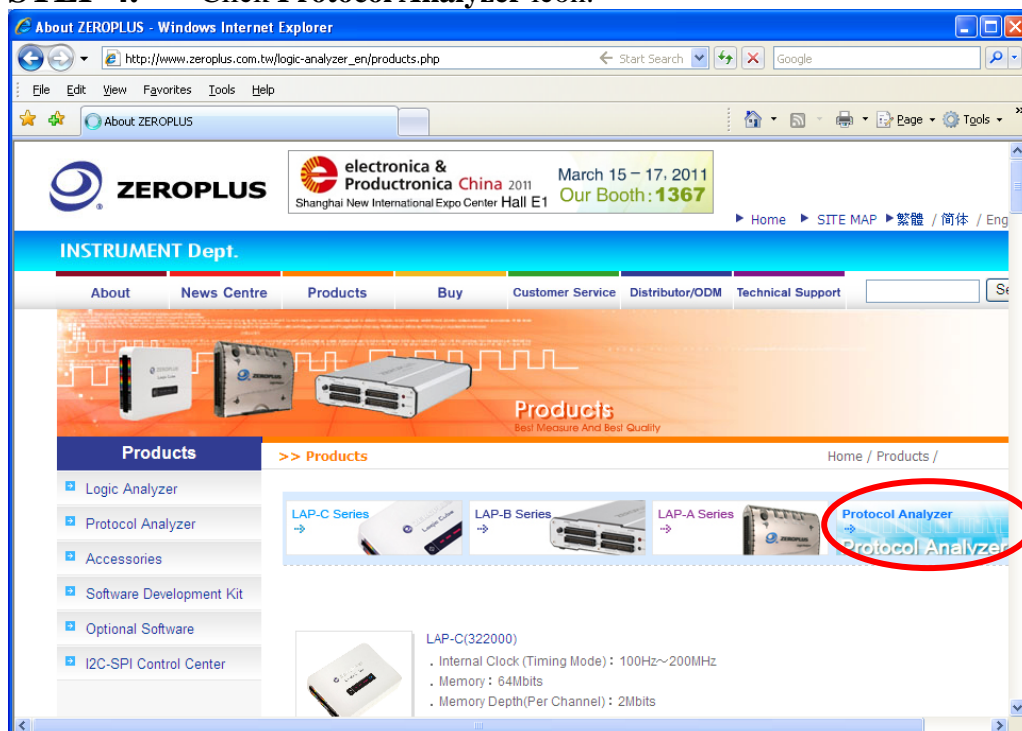




STEP 3. Click **Products** menu or select **Protocol Analyzer** item from its pull-down menu to go straight to STEP 5.

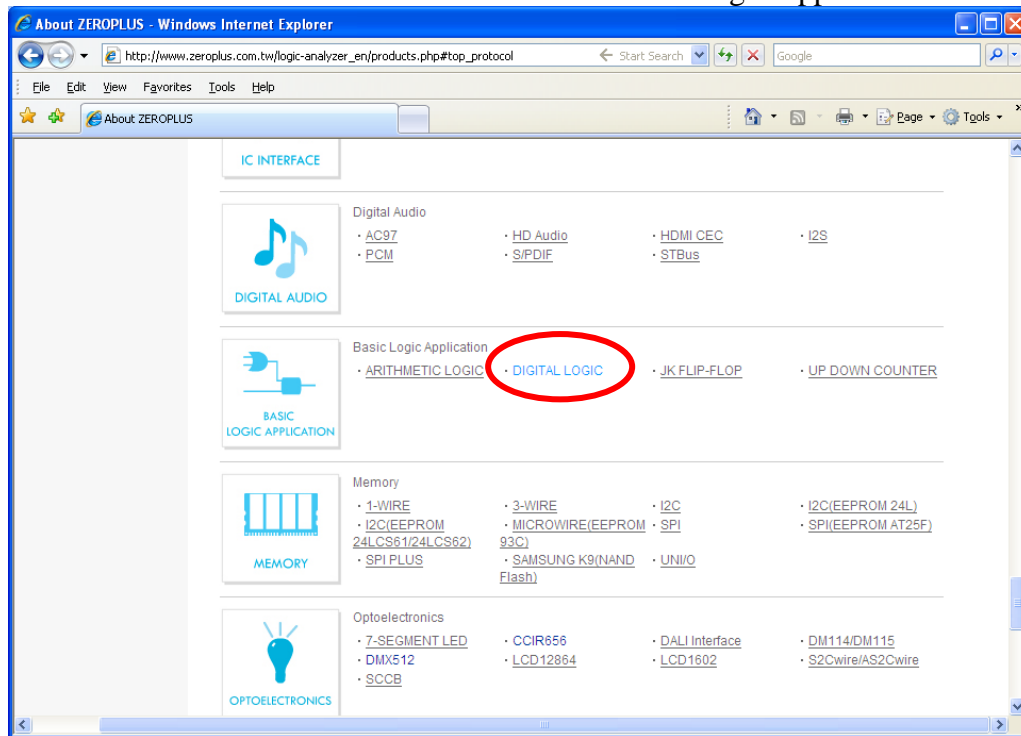


STEP 4. Click **Protocol Analyzer** icon.

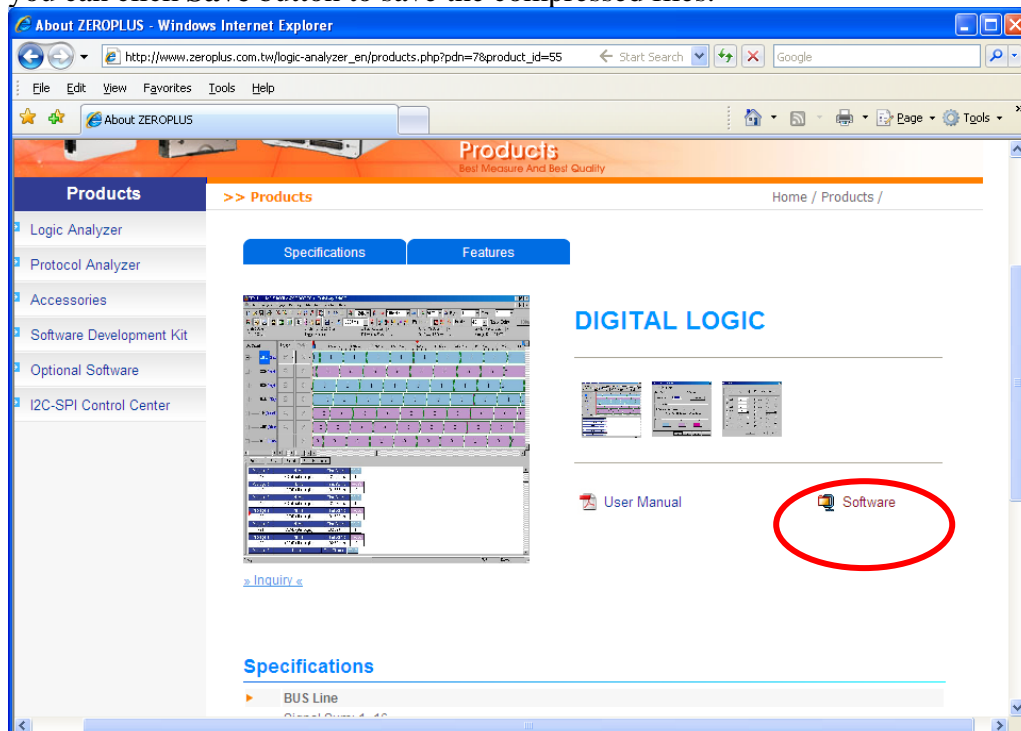




STEP 5. Click **DIGITAL LOGIC** in the Basic Logic Application.



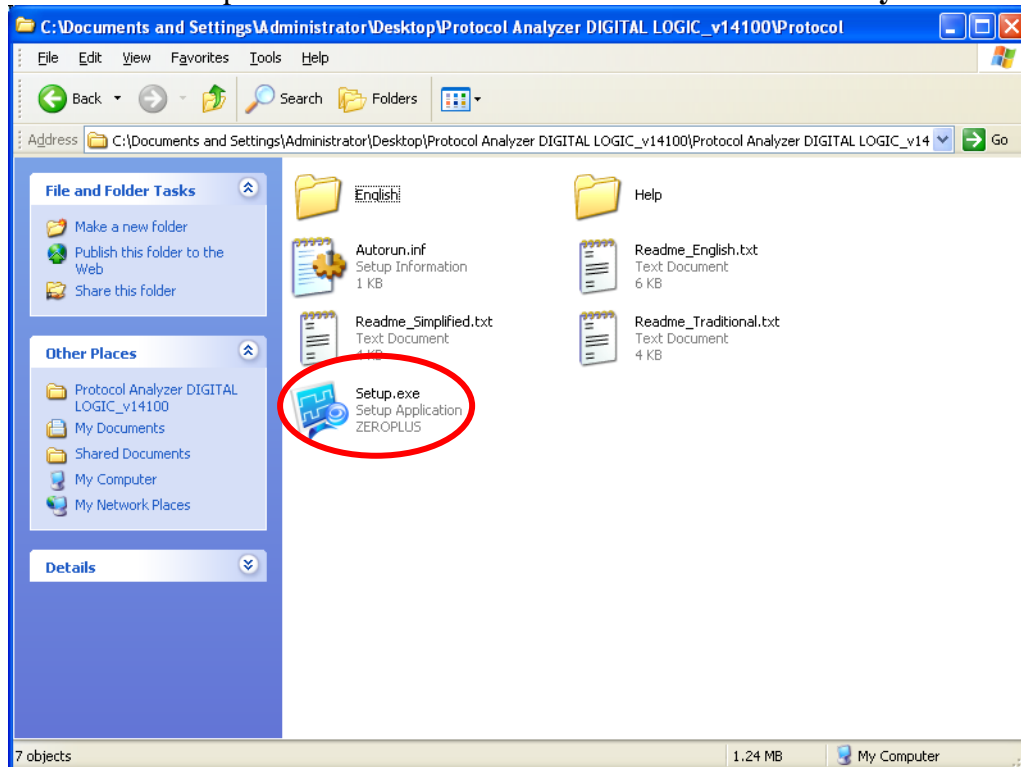
STEP 6. Click **Software** in the Products page. When the File Download dialog box appears, you can click **Save** button to save the compressed files.



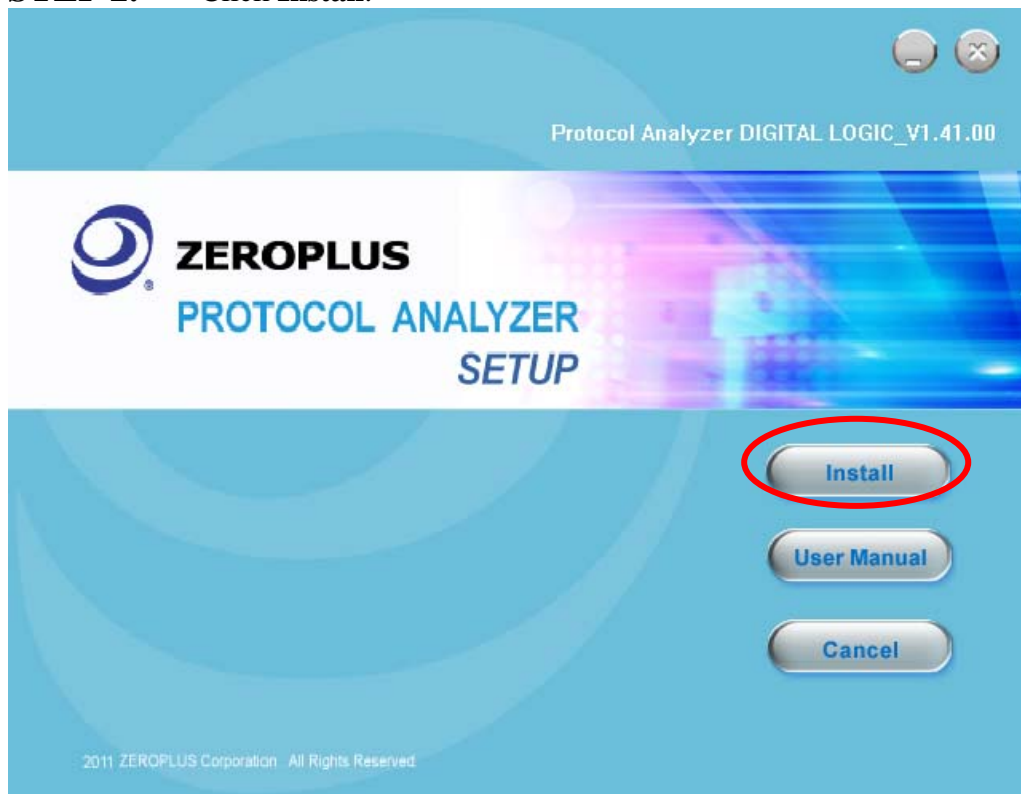


2 Software Installation

STEP 1. Open the downloaded folder to install **Protocol Analyzer DIGITAL LOGIC**.

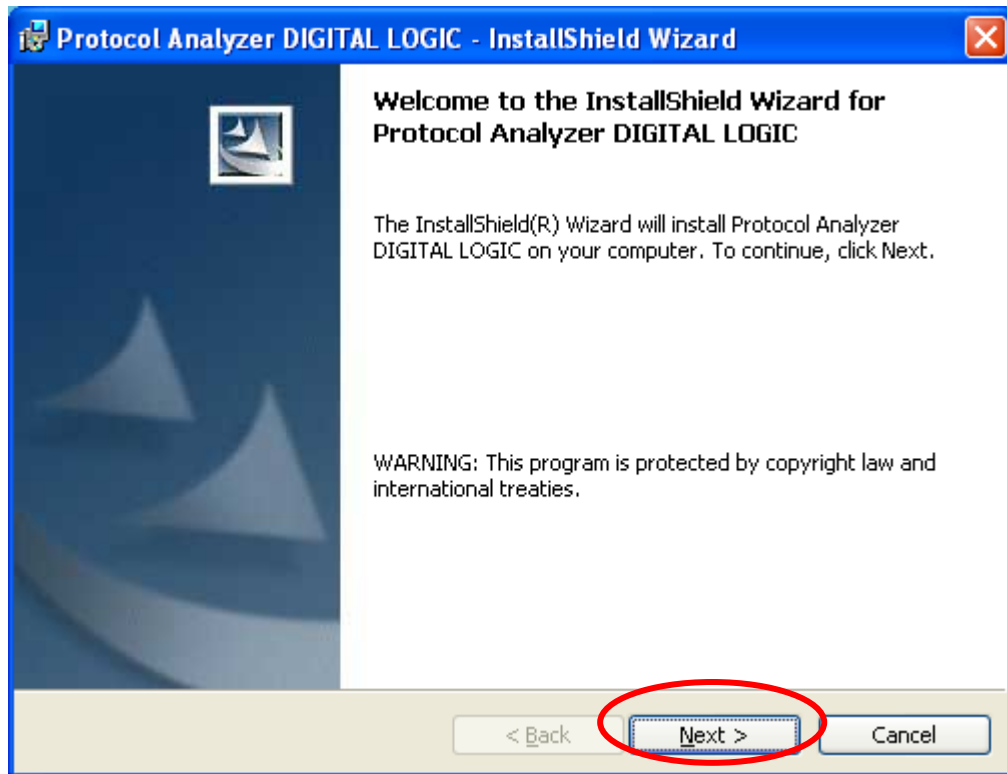


STEP 2. Click **Install**.

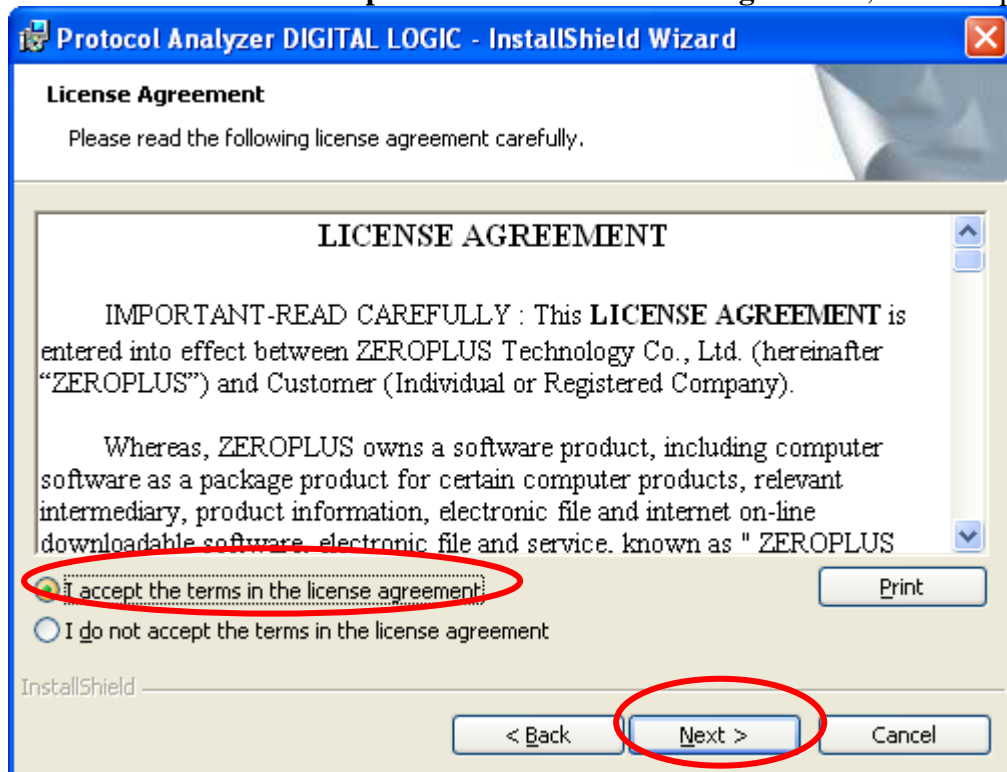




STEP 3. Click Next.



STEP 4. Select **I accept the terms in the license agreement**, and then press Next.





STEP 5. Fill in users' information in the below dialog box and then click Next.

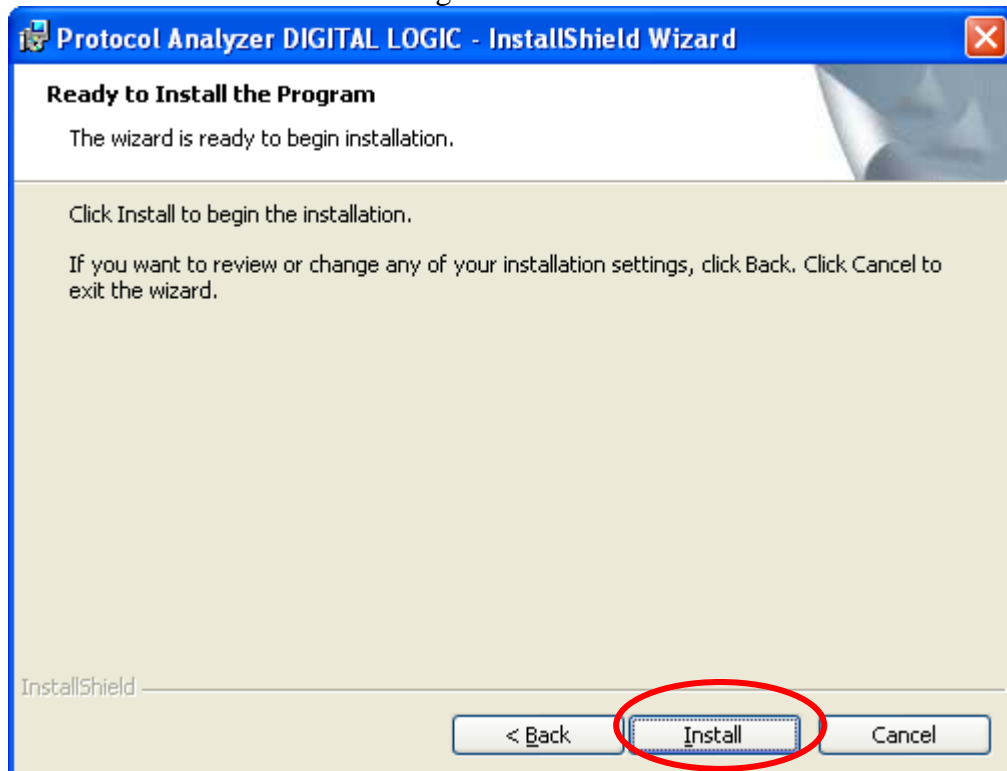
The dialog box is titled "Protocol Analyzer DIGITAL LOGIC - InstallShield Wizard". It has a blue title bar with a close button. The main area is titled "Customer Information" and contains the text "Please enter your information." Below this are two text input fields: "User Name:" with "Microsoft" entered, and "Organization:" with "User" entered. Below these fields are two radio button options: "Anyone who uses this computer (all users)" (selected) and "Only for me (Microsoft)". At the bottom, there are three buttons: "< Back", "Next >" (circled in red), and "Cancel". The "InstallShield" logo is visible in the bottom left corner.

STEP 6. Select **Complete** and then click **Next**.

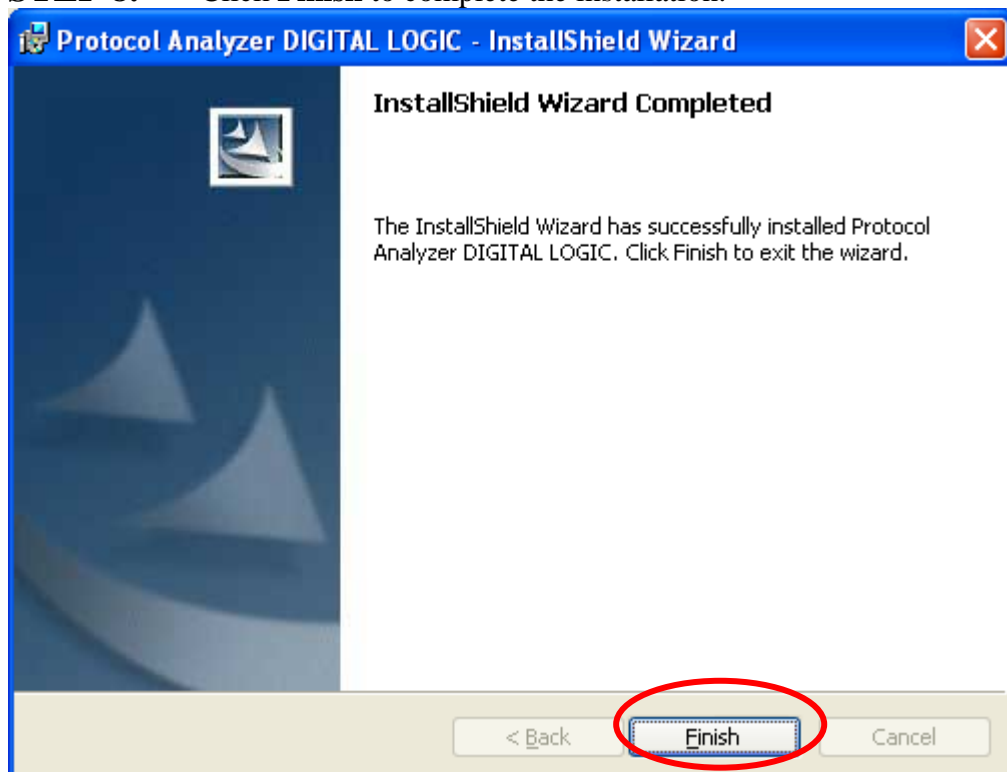
The dialog box is titled "Protocol Analyzer DIGITAL LOGIC - InstallShield Wizard". It has a blue title bar with a close button. The main area is titled "Setup Type" and contains the text "Choose the setup type that best suits your needs." Below this is the text "Please select a setup type." There are two radio button options: "Complete" (selected) and "Custom". The "Complete" option has a description: "All program features will be installed. (Requires the most disk space.)". The "Custom" option has a description: "Choose which program features you want installed and where they will be installed. Recommended for advanced users." At the bottom, there are three buttons: "< Back", "Next >" (circled in red), and "Cancel". The "InstallShield" logo is visible in the bottom left corner.



STEP 7. Click **Install** to begin the installation.



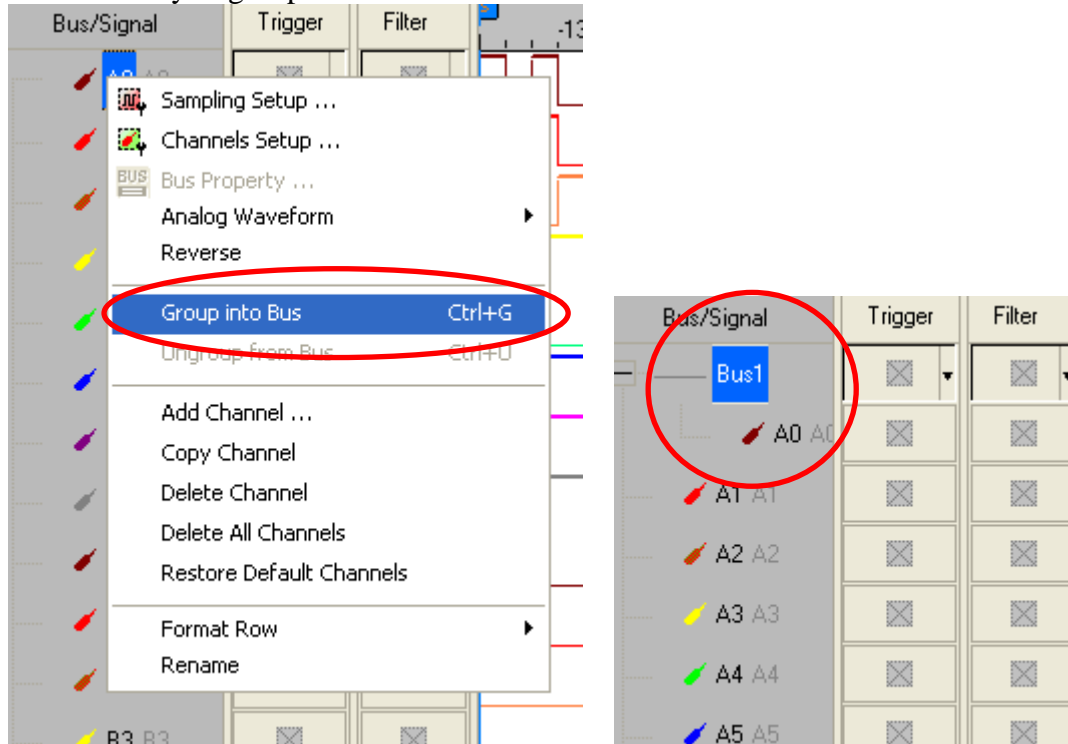
STEP 8. Click **Finish** to complete the installation.



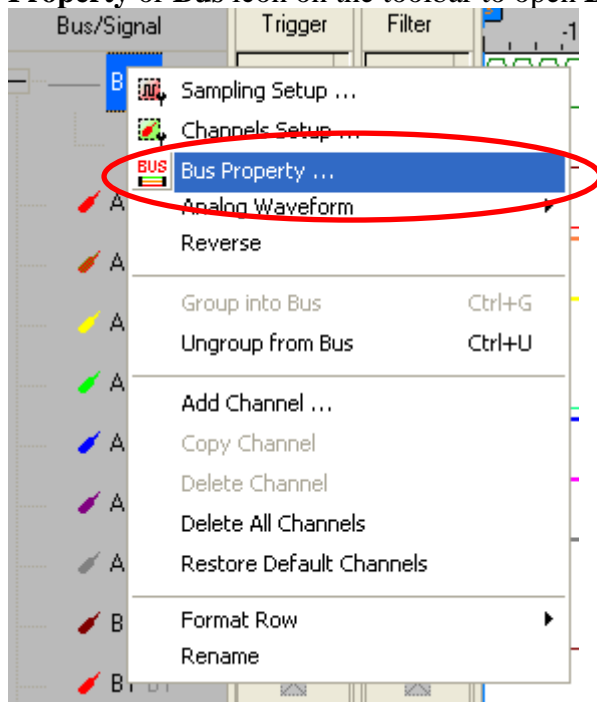


3 Software Register

STEP 1. Open the Logic Analyzer and group the unanalyzed channels into **Bus1** by pressing the **Right Key** on the mouse. **DIGITAL LOGIC** needs one or more channels to decode signals, so it is necessary to group one or more channels into a Bus.

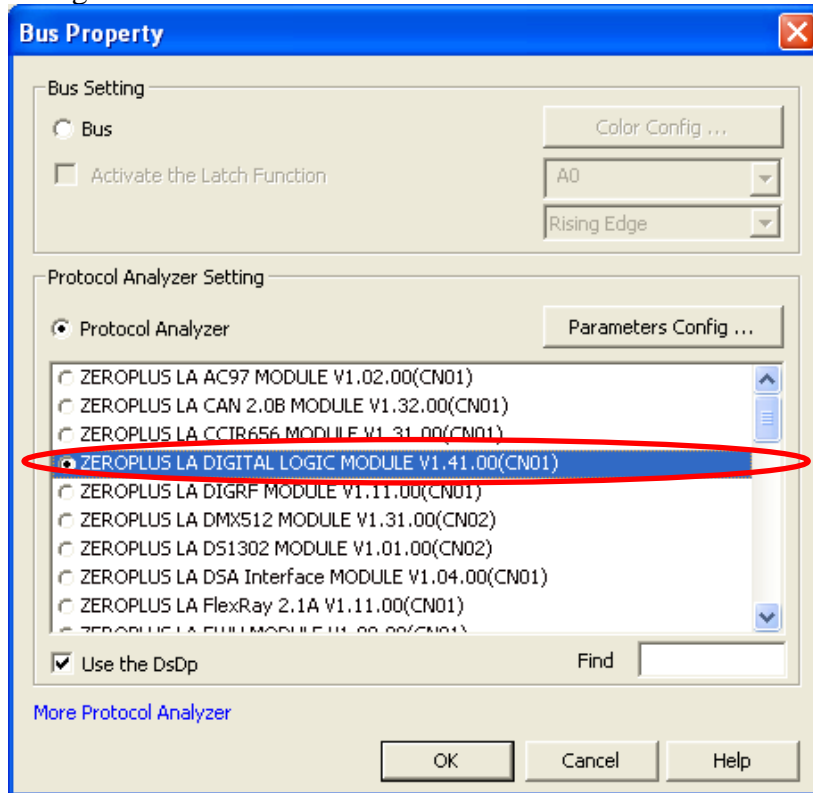


STEP 2. Select **Bus1**, and press **Right Key** on the mouse to list the menu, then press **Bus Property** or **Bus** icon on the toolbar to open **Bus Property** dialog box.

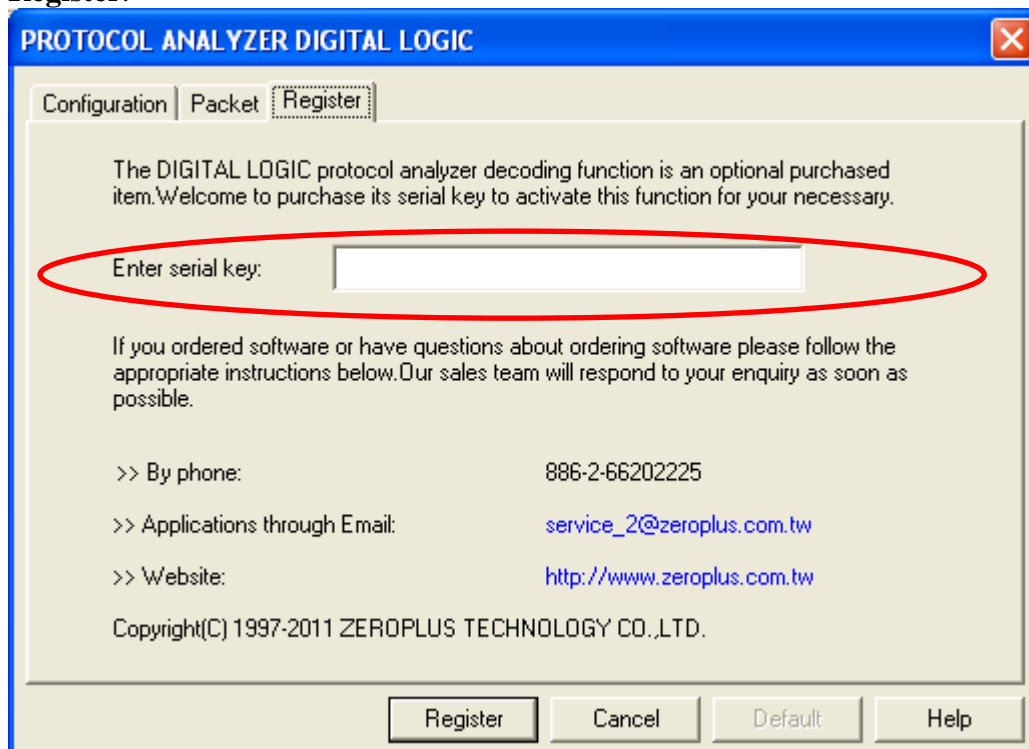




STEP 3. For Protocol Analyzer **DIGITAL LOGIC** Parameters Configuration, select Protocol Analyzer, and then choose **ZEROPLUS LA DIGITAL LOGIC MODULE V1.41.00(CN01)**. Next click **Parameters Configuration** to open the **PROTOCOL ANALYZER DIGITAL LOGIC** dialog box.

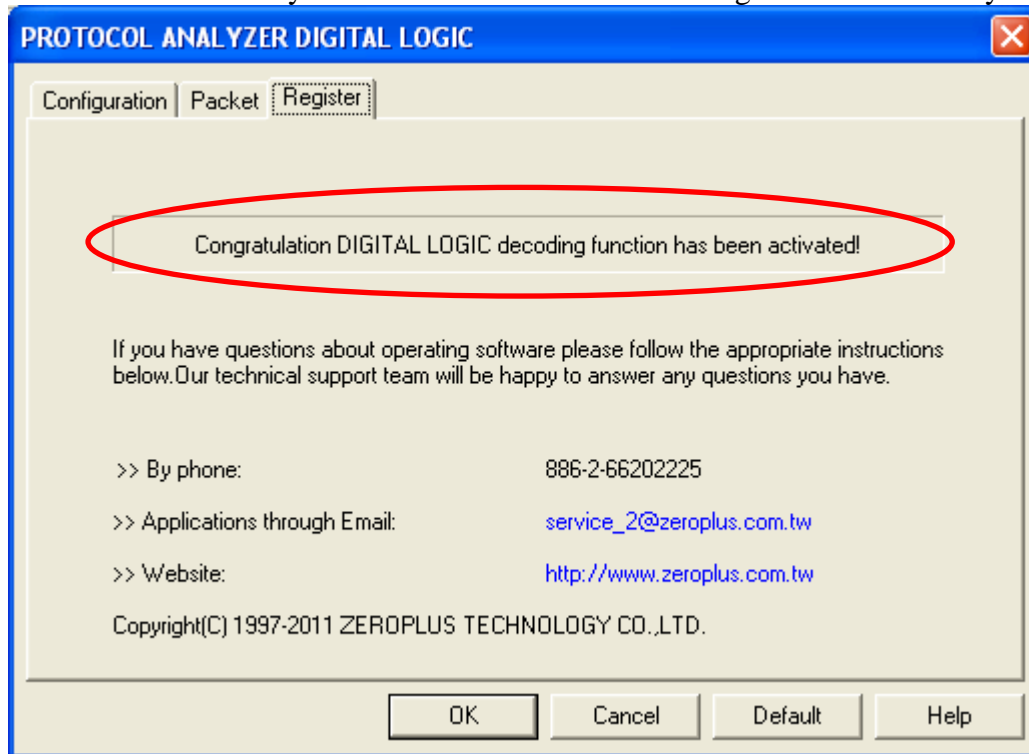


STEP 4. Press the Register tab to enter the serial key of the **DIGITAL LOGIC**. Then, press **Register**.





STEP 5. After pressing the Register button, the following dialog box will appear; it denotes that the Protocol Analyzer DIGITAL LOGIC has been registered successfully.

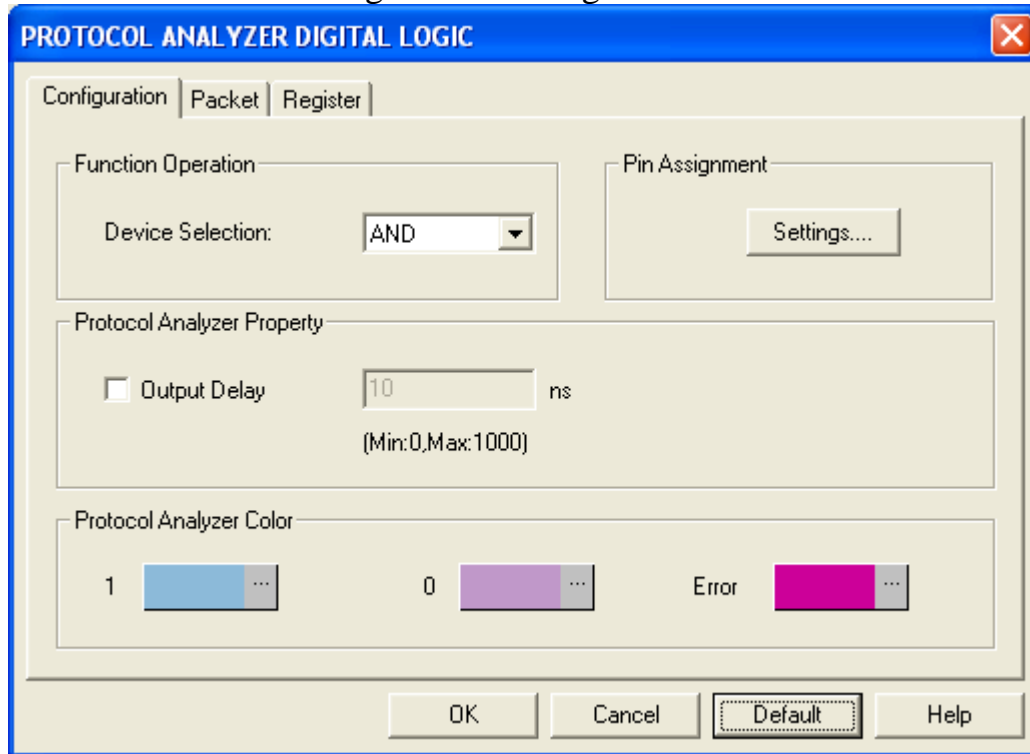




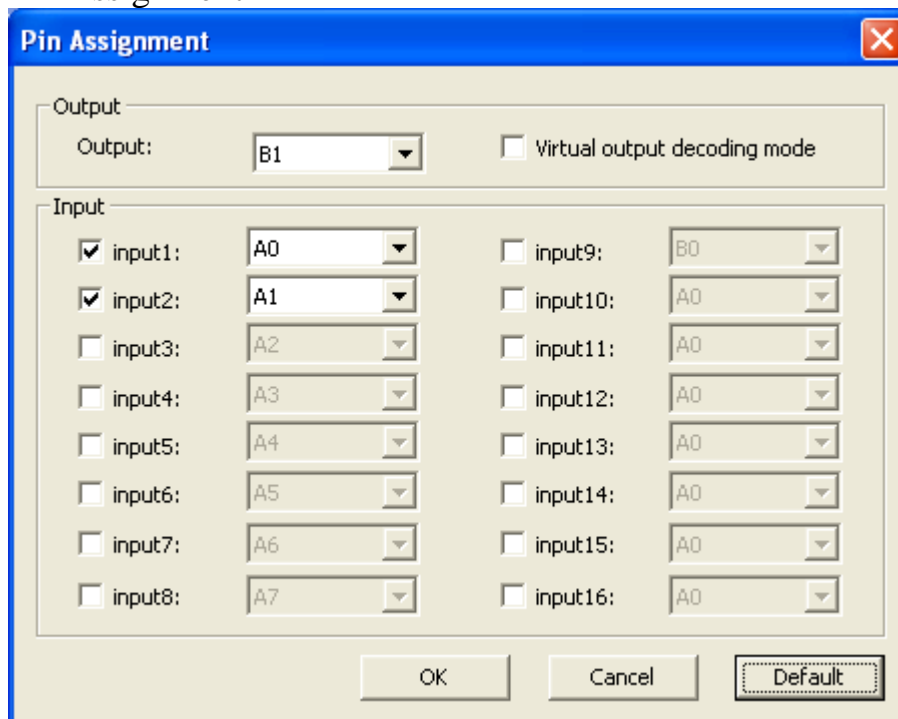
4 User Interface

Please refer to the below images to select options of setting **DIGITAL LOGIC Module**.

DIGITAL LOGIC Configuration Dialog Box



Pin Assignment





Function Operation

Device Selection: Set the Device to AND, OR, NAND, NOR, XOR, XNOR or NOT.

Pin Assignment

Output/Input Channel: Set the required channels and the number of the channel.

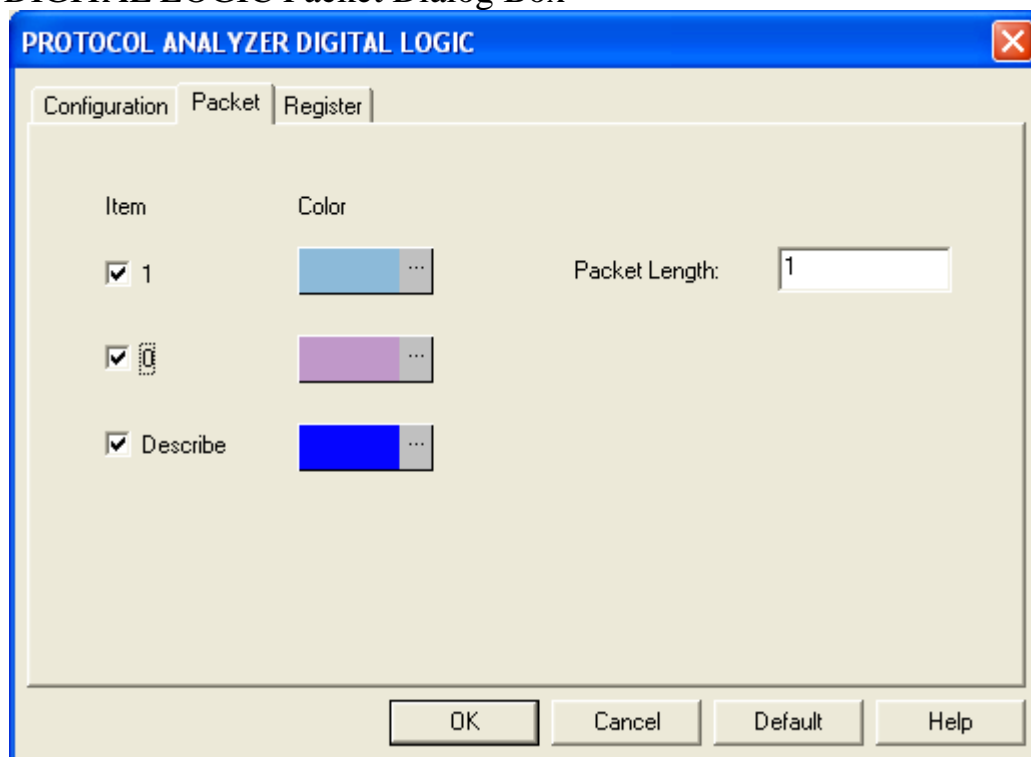
Virtual output decoding mode: Users can select the Virtual output decoding mode to decode the signals. That is to say, the signal can be decoded after the Output item is disabled.

Output Delay: Set the Output Delay in the range from 0 to 1000ns, the default is 10ns.

Protocol Analyzer Color

Users can vary the color of the items according to their own requirements.

DIGITAL LOGIC Packet Dialog Box

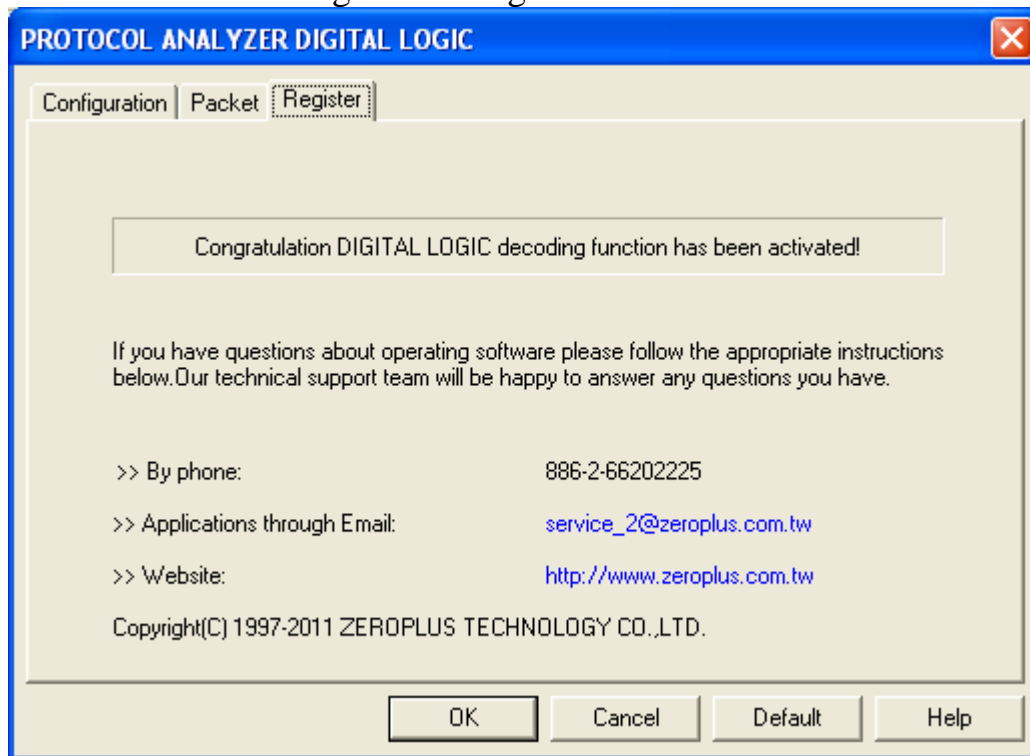


In the Packet dialog box, users can vary the color of items and set the item to be displayed.

Packet Length: Set the Length in the range from 1 to 1000.



DIGITAL LOGIC Register Dialog Box

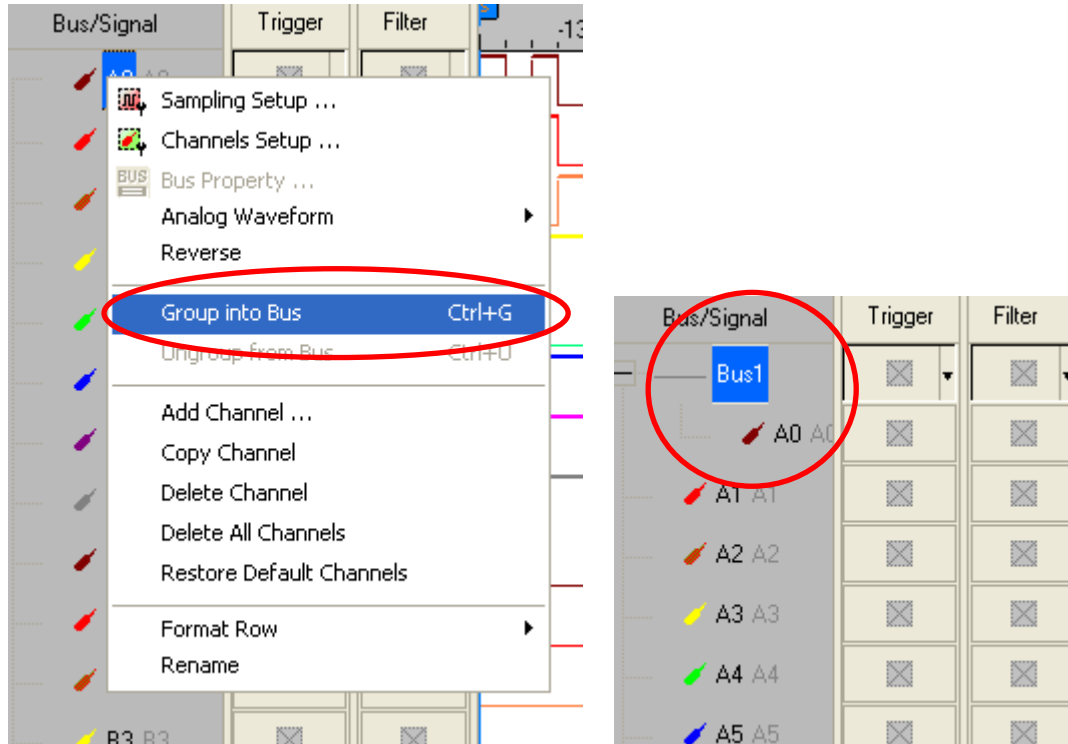


There is written ZeroPlus company information. If you have any questions about software operations, you can contact ZeroPlus by Telephone or Email.

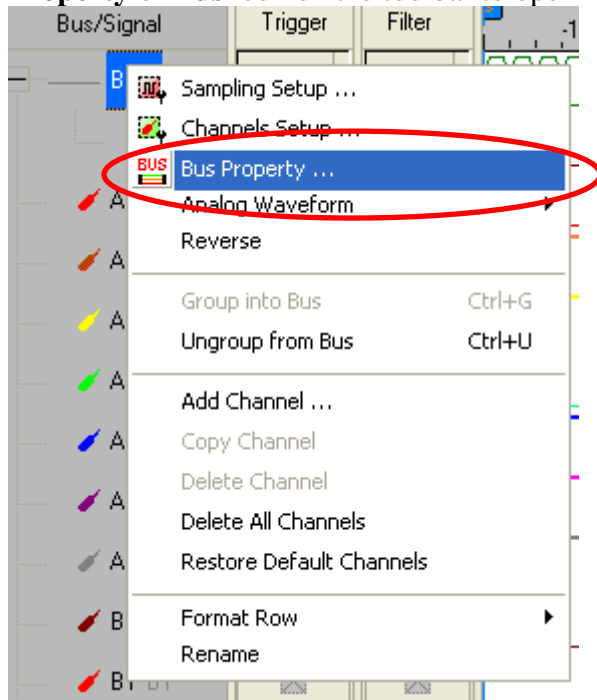


5 Operating Instructions

STEP 1. Group the unanalyzed channels into **Bus1** by pressing the **Right Key** on the mouse. **DIGITAL LOGIC** needs one or more channels to decode signals, so it is necessary to group one or more channels into a Bus.

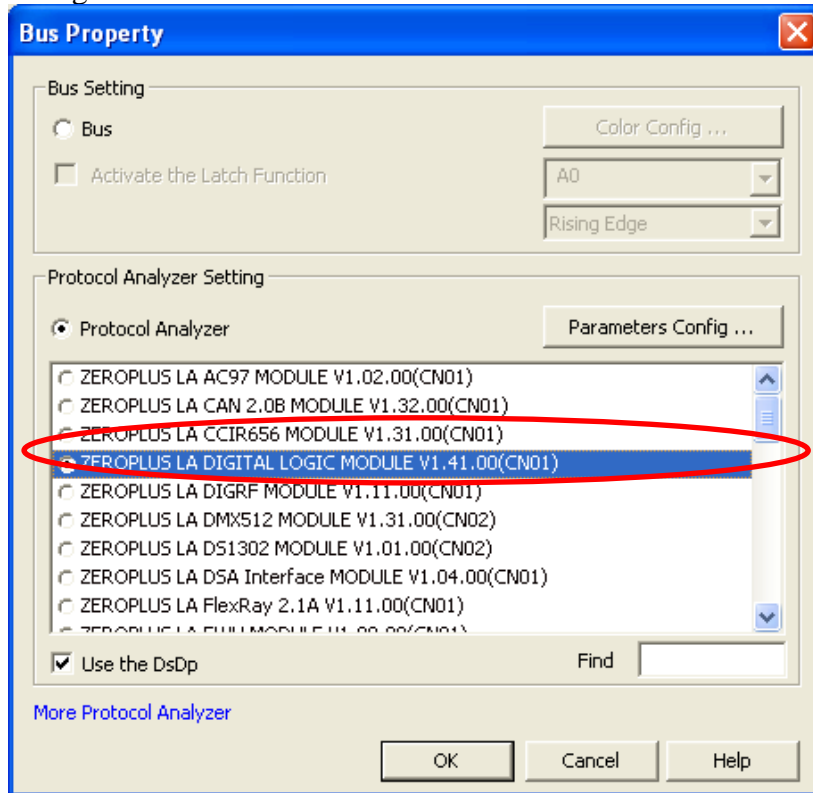


STEP 2. Select **Bus1**, and press **Right Key** on the mouse to list the menu, then press **Bus Property** or **Bus** icon on the toolbar to open **Bus Property** dialog box.

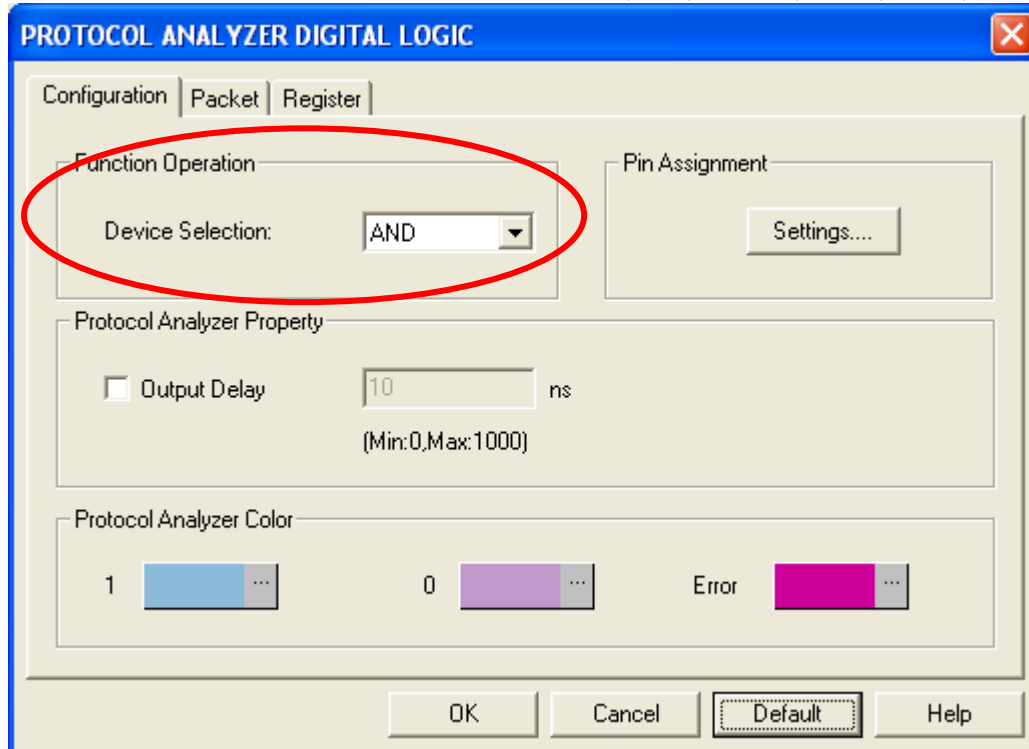




STEP 3. For Protocol Analyzer **DIGITAL LOGIC** Parameters Configuration, select Protocol Analyzer, and then choose **ZEROPLUS LA DIGITAL LOGIC MODULE V1.41.00(CN01)**. Next click **Parameters Configuration** to open the **PROTOCOL ANALYZER DIGITAL LOGIC** dialog box.

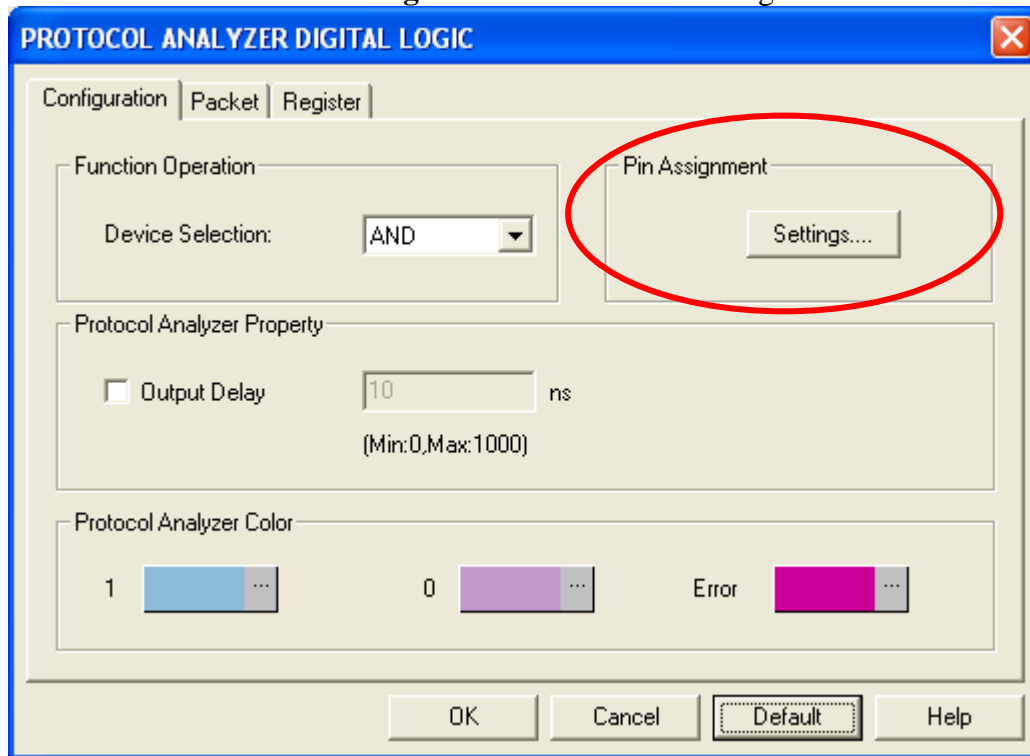


STEP 4. Set the **Device Selection** to AND, OR, NAND, NOR, XOR, XNOR or NOT.

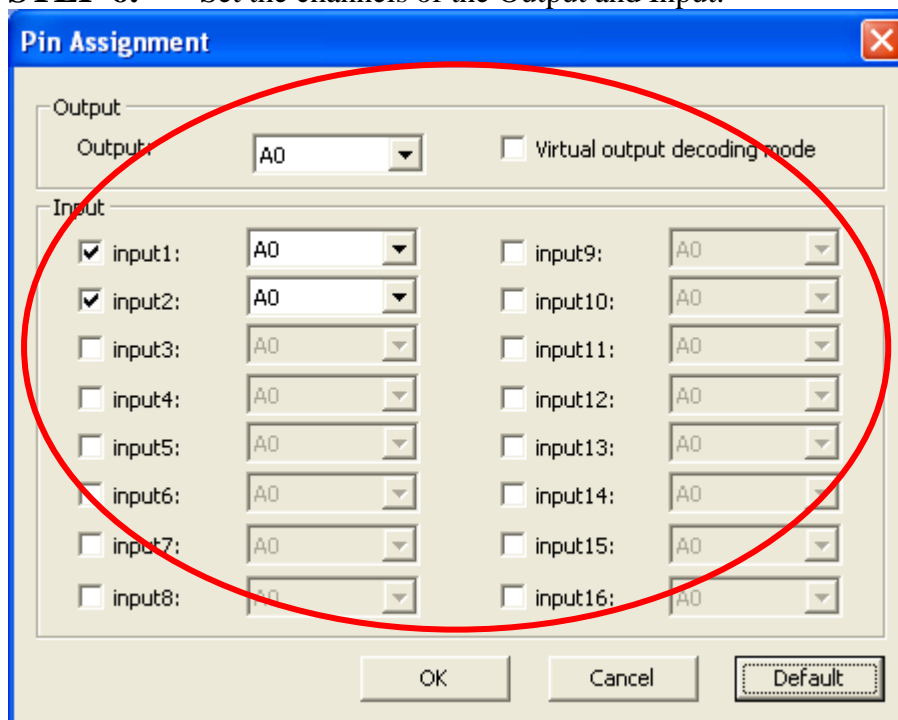




STEP 5. Press the **Settings** button to set the Pin Assignment.

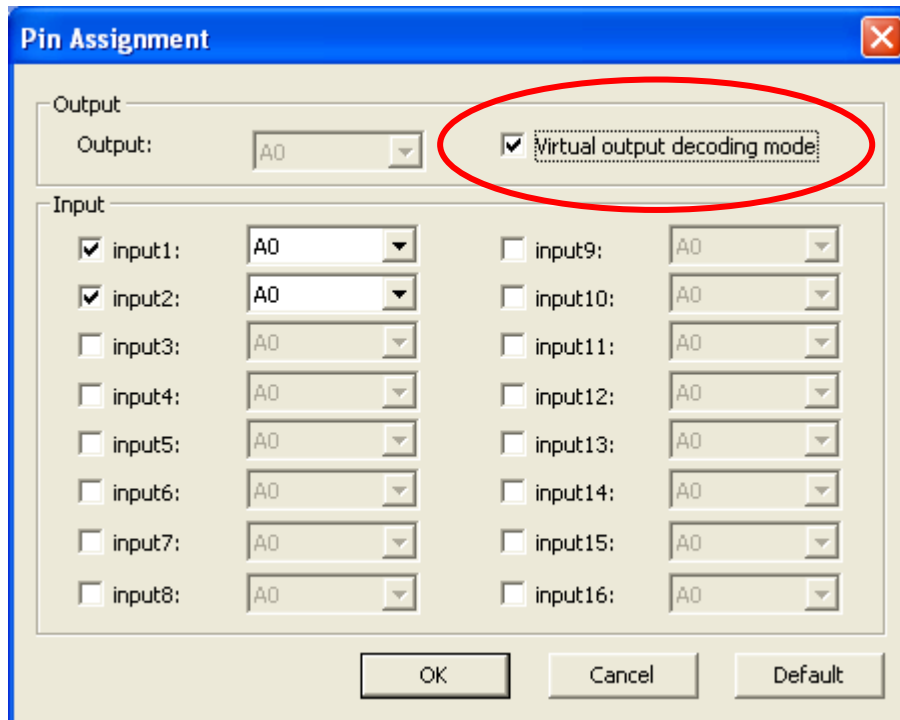


STEP 6. Set the channels of the Output and Input.

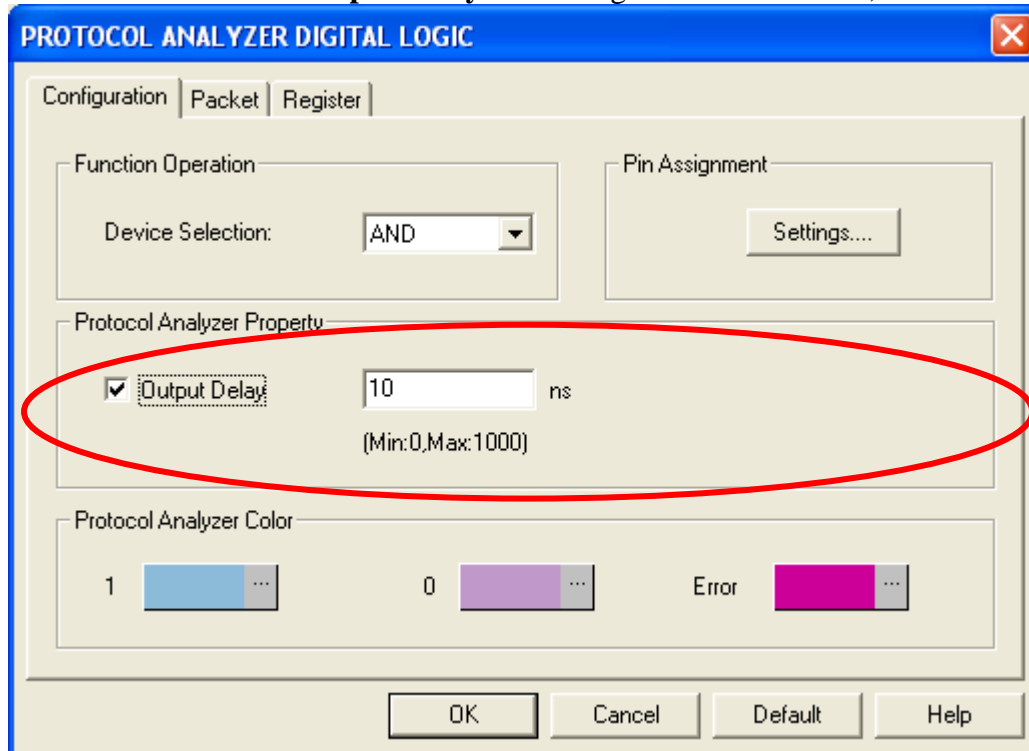




STEP 7. Set the **Virtual output decoding mode**. Users can select the Virtual output decoding mode to decode the signals. That is to say, the signal can be decoded after the Output item is disabled.

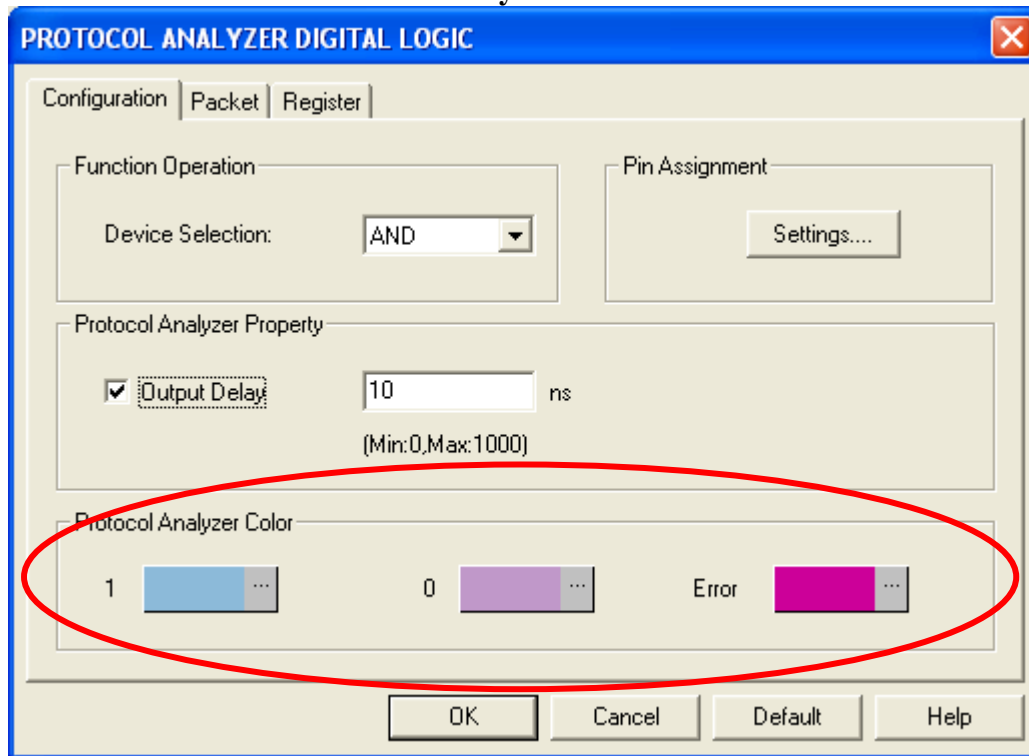


STEP 8. Set the **Output Delay** in the range from 0 to 1000ns, the default is 10ns.



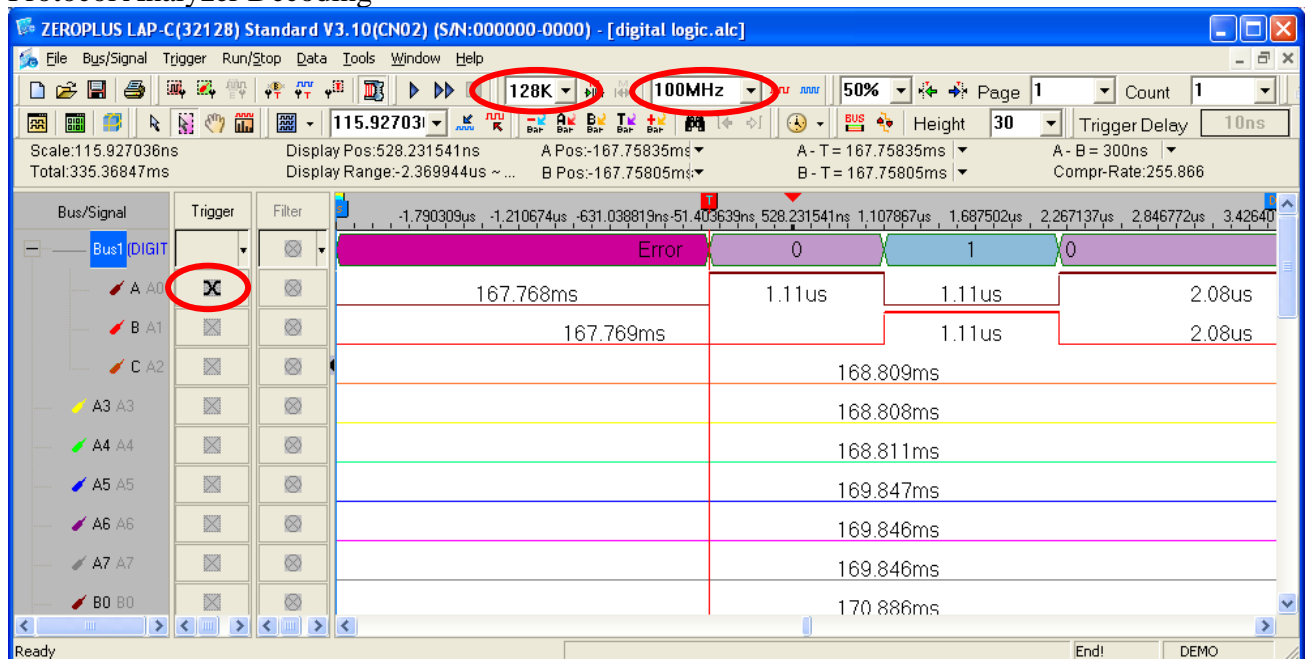


STEP 9. Set the Protocol Analyzer Color.



STEP 10. Following pictures show the completion of the protocol analyzer decoding and the packet list. The trigger condition is set as Either Edge; the memory depth is 128K; the sampling frequency is 100MHz (the sampling frequency should be more than four times higher than the signal to be tested).

Protocol Analyzer Decoding





Packet List

